

MOORING BUOY

MB-1250



MB-1250-D-12T

Diameter: 1.25m

Volume: 0.4m³

For yachting and harbour

A mooring buoy with a polyethylene float requires less maintenance, less logistical resources and offers a longer service life than steel models.

- 2 segments of float in precompounded low density virgin polyethylene, a material that is fully recyclable and does not need anti-fouling coating
- Central structure in steel with approved anti-corrosion system (galvanization, painting, anodes)
- Designed by GISMAN as per user requirements (site conditions, type of vessels...) and mooring calculation in conformance with international standards (DNV and API RP 2SK)

1.25M DIAMETER FLOAT

0.4m³ volume

ADDITIONAL CHARACTERISTICS

Net buoyancy (L)

320

Draught (m)

0.4

Submergence (kg/cm)

12.6

Total height (m)

1.12

SWL (tons)

5.5 to 15

Configurations

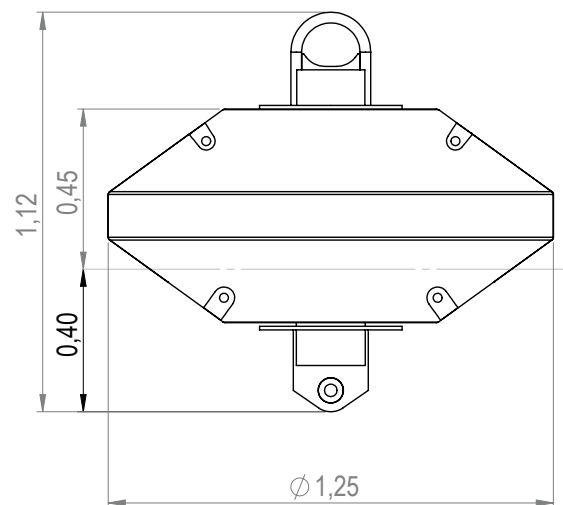
«D»-link, «S»-Shackle,
«CT» Chain Through or «T»-Static T.

OPTIONS

Foaming with high density Polystyrene (EPS) or Polyurethane (PU)

Retro-reflective stripes

Identification/Marking with long life stickers



MB-1250-D-12T

V1 - 03/2026

Specifications subject to change or variation without notice - 2026