



# THE RANGE OF LED LANTERNS



# CONTENT

1

## INTRODUCTION

- Design
- Range

2

## SELF-CONTAINED LED LANTERNS

- GSC-3
- GSC-5-SS
- GSC-5-MS
- GSC-5-ES
- GSC-7-SS
- GSC-7-MS
- GSC-8

3

## STAND ALONE LED LANTERNS

- GSA-5
- GSA-8
- GML

4

## APPLICATION SUITE

- Solar Calculator
- *GISMAN Bluetooth®*
- A2NGO

# DESIGN PRINCIPALS

Light characteristics

Functional features

Power Supply

Compliance (Tests And Certification)

## — ● LIGHT CHARACTERISTICS

**In-house characterization of electrical, thermal and optical performance**

**Compliant to IALA Recommendation E-200 on Marine Signal Light**

**High Power LED**

**Thermal LED management**

## — ● FUNCTIONAL FEATURES

**Serial Bluetooth® connectivity (programming and control)**

**Infra Red Programmer**

**369 + 1 custom flash characters**

**Offset synchronisation**

## — ● POWER SUPPLY

**High performance, premium grade monocrystalline solar panels**

**Active MPPT charging regulation**

**ON/OFF Autonomy management**

## — ● COMPLIANCE (TESTS AND CERTIFICATION)

**Vibration and shock MIL STD 202G**

**Salt fog and thermal shock IEC 60945**

**Ingress Protection IP68-IEC 60529**

**CE Directive 2014/53/UE**

**Cybersecurity NIST 800**



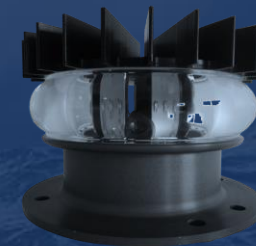
# LANTERN RANGE

(Designed and made  
by GISMAN in France)

● SELF-CONTAINED LANTERNS



● STAND ALONE LANTERNS



● APPLICATION SUITE



# SELF-CONTAINED LANTERNS

Range from 1 to 10 NM

-----●

GSC-3



-----●

GSC-5-SS & MS



-----●

GSC-5-ES



-----●

GSC-7-SS & MS



-----●

GSC-8





GISMAN  
Bluetooth®

GSC-3

Up to 5 NM

ECONOMICAL  
AND  
EFFICIENT

Range @T=0.74 in NM	2 to 5 NM depending on colors
Vertical divergence	> 7° @50% & 20° @10%
Solar Generator	5.6W & 4Ah (SS) / 8Ah (MS)
Weight	1.6kg (SS-4AH) / 2.3kg (MS-8AH)
Connectivity	GISMAN Bluetooth®
Charge Port	Integrated
Option	GPS, Switch





GISMAN  
Bluetooth®

GSC-5-SS  
Up to 6 NM+

VERSATILE  
AND  
CONNECTED

Range @T=0.74 in NM	2 to 6 NM+ depending on colors
Vertical divergence	> 7° @50% & 20° @10%
Solar Generator	16W & 12Ah
Weight	6.7kg
Connectivity	GISMAN Bluetooth® Module A2NGO (SAT/GSM/SIGFOX)
Option	GPS, Charge Port, Switch, AL/ ALAIS Output





GISMAN  
Bluetooth®

# GSC-5-MS

Up to 6 NM+

# ENHANCED CAPACITIES

Range @T=0.74 in NM	2 to 6 NM+ depending on colors
Vertical divergence	> 7° @50% & 20° @10%
Solar Generator	32W & 12Ah (MS-12AH) / 24Ah (MS-24AH)
Weight	8.9kg (MS-12AH) / 13kg (MS-24AH)
Connectivity	GISMAN Bluetooth® Module A2NGO (SAT/GSM/SIGFOX)
Option	GPS, Charge Port, Switch, AL/ ALAIS Output





GISMAN  
Bluetooth®

GSC-5-ES  
Up to 6 NM+

CONNECTED  
WITH  
INTEGRATED AIS

Range @T=0.74 in NM	2 to 6 NM+ depending on colors
Vertical divergence	> 7° @50% & 20° @10%
Solar Generator	40W & 28Ah (ES-28AH) / 40Ah (ES-40AH)
Weight	24kg (ES-28AH) / 28.2kg (ES-40AH)
Connectivity	GISMAN Bluetooth® Module A2NGO (SAT/GSM/SIGFOX) AIS Transponder Type 1 / Type 3
Option	GPS, Charge Port, AL/ ALAIS Output Integrated VHF (Antenna on the lantern) Deported VHF (Antenna on the top mark)





GISMAN  
Bluetooth®

# GSC-7-SS

Up to 10 NM+

COMPACT  
AND  
HIGH PERFORMANCE

Range @T=0.74 in NM	4 to 10 NM+ depending on colors
Vertical divergence	> 9° @50% or 10° @50% (10D model)
Solar Generator	16W & 12Ah
Weight	8.2kg
Connectivity	GISMAN Bluetooth® Module A2NGO (SAT/GSM/SIGFOX)
Option	GPS, Charge Port, Switch, AL/ ALAIS Output





GISMAN  
Bluetooth®

# GSC-7-MS

Up to 10 NM+

## ENHANCED CAPACITIES

Range @T=0.74 in NM	4 to 10 NM+ depending on colors
Vertical divergence	> 9° @50% or 10° @50% (10D model)
Solar Generator	32W & 12Ah (MS-12AH) / 24Ah (MS-24AH)
Weight	10.4kg (MS-12AH) / 14.5kg (MS-24AH)
Connectivity	GISMAN Bluetooth® Module A2NGO (SAT/GSM/SIGFOX)
Option	GPS, Charge Port, Switch, AL/ ALAIS Output



Satellite



GSM



SIGFOX



GISMAN  
Bluetooth®

GSC-8

Up to 10 NM+

PERFORMING  
AND  
CONNECTED

Range @T=0.74 in NM	4 to 10 NM+ depending on colors
Vertical divergence	> 9° @50% or 10° @50% (10D model)
Solar Generator	40W & 28Ah / 40Ah
Weight	24kg (28AH) / 28.3kg (40AH)
Connectivity	GISMAN Bluetooth® Module A2NGO (SAT/GSM/SIGFOX) AIS Transponder Type 1 / Type 3
Option	GPS, Charge Port, AL/ ALAIS Output Integrated VHF (Antenna on the lantern) Deported VHF (Antenna on the top mark)



Satellite



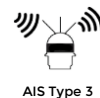
GSM



SIGFOX



AIS Type 1



AIS Type 3

# STAND ALONE LANTERNS

External Power Supply  
Range up to 17 NM+

-----• **GSA-5**



-----• **GSA-8**



-----• **GML**





GISMAN  
Bluetooth®

GSA-5

Up to 6 NM+

ECONOMICAL

AND

LOW POWER CONSUMPTION



Range @T=0.74 in NM	2 to 6 NM+ depending on colors
Vertical divergence	> 7° @50% & 20° @10%
Weight	0.6kg
Connectivity	GISMAN Bluetooth® Module A2NGO (SAT/GSM/SIGFOX)
Option	GPS, AL/ ALAIS Output





GISMAN  
Bluetooth®

# GSA-8

## Up to 10 NM+

### PERFORMING AND CONNECTED

Range @T=0.74 in NM	4 to 10 NM+ depending on colors
Vertical divergence	> 9° @50% or 10° @50% (10D model)
Weight	0.7kg
Connectivity	GISMAN Bluetooth® Module A2NGO (SAT/GSM/SIGFOX)
Option	GPS, AL/ ALAIS Output





GISMAN  
Bluetooth®

GML

Up to 17 NM+

HIGH PERFORMANCE

AND

LOW POWER CONSUMPTION

Range @T=0.74 in NM	From 14.6NM (1 Tier) up to 17.2NM (3 Tiers) in White
Colors	Red, Green, Yellow (1 Tier) White (1 Tier, 2 Tiers & 3 Tiers)
Vertical divergence	2.5° @ 50%
Weight	From 3.3kg (1 Tier) to 6.2kg (3 Tiers)
Connectivity	<i>GISMAN Bluetooth®</i> <i>Module A2NGO (SAT/GSM/SIGFOX)</i> <i>AIS Transponder Type 1 / Type 3</i>
Option	GPS, AL/ ALAIS Output



Satellite



GSM



SIGFOX



AIS Type 1



AIS Type 3

# APPLICATION SUITE

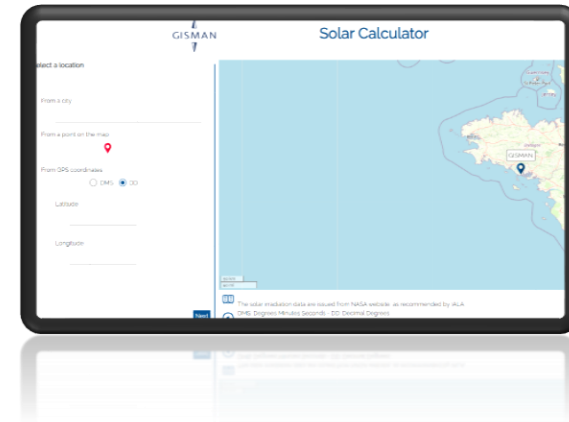
-----● GISMAN BLUETOOTH®



GISMAN's Know-How for your peace of mind

-----●

**SOLAR  
CALCULATOR**



-----●

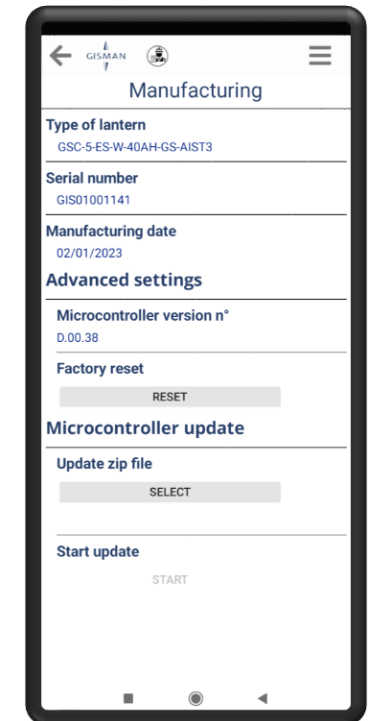
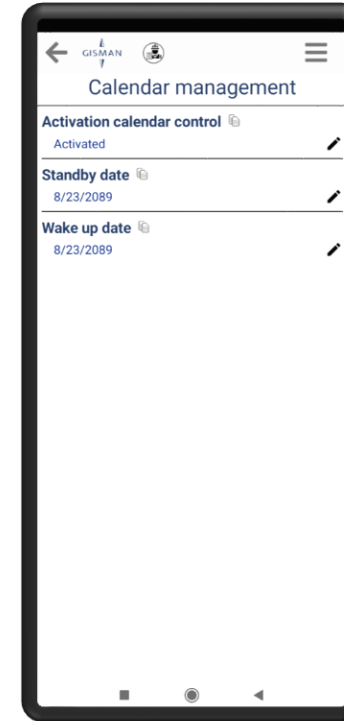
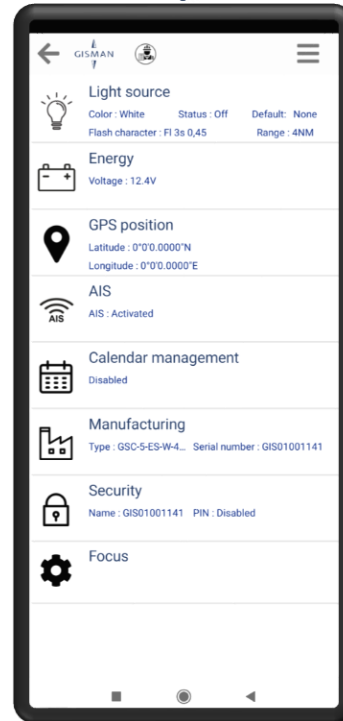
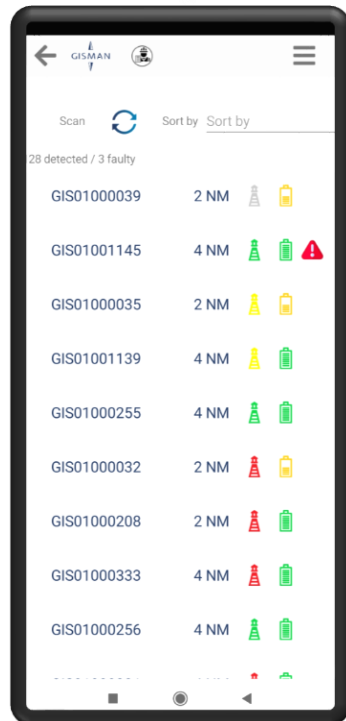
**MONITORING &  
MAINTENANCE**



# APPLICATION GISMAN BLUETOOTH®

EASY AND FAST PROGRAMMING  
REAL-TIME PARAMETER FEEDBACK

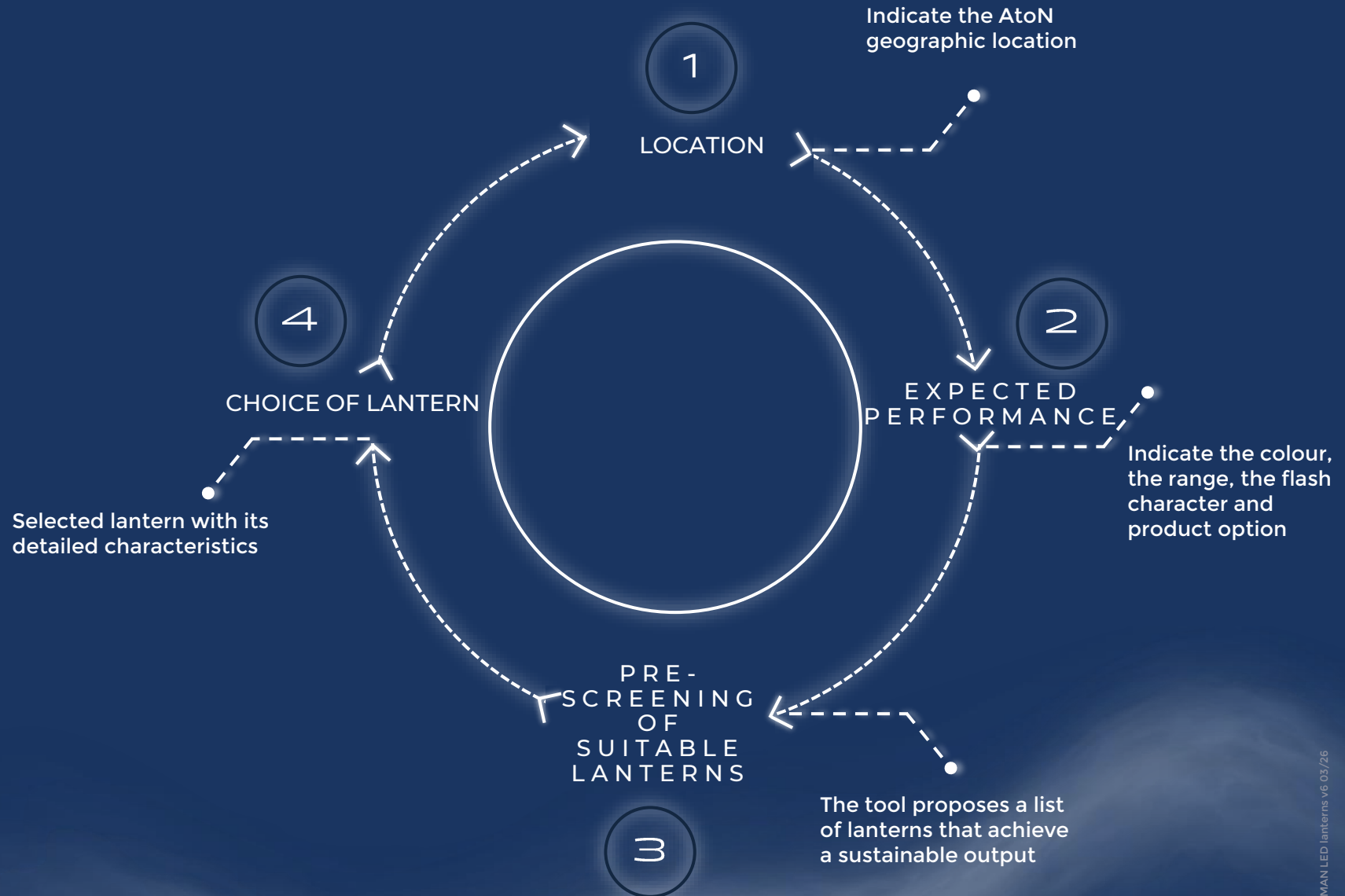
Available in French, English, Spanish and Portuguese



# SOLAR CALCULATOR

<https://calculator.gisman-web.com>

On-line simulation tool to compare  
then select your GISMAN's marine  
lantern





A2NGO

**KEEP IN CONTROL!**

# A2NGO

## CYBER-SECURE WEB PORTAL

- Monitoring Application
- Maintenance Application

### -----● MONITORING APPLICATION

**Control your AtoN assets remotely, in real time and at low cost**

### -----● MAINTENANCE APPLICATION

**Centralise the management of your AtoN assets to optimise their serviceability**



# GISMAN, SINCE 1862.

close to 500 customers in 80 countries

1

Implementation of major historic lighthouses and light stations on all continents.

2

Acknowledged as a pioneering designer and manufacturer of modular plastic navigational buoys in the early 1990s.

3

Market introduction of its own range of marine lanterns and applications suite for monitoring and maintenance in 2022.



Quality Management System approved to standards ISO 9001:2015.



IALA was established in 1957. GISMAN is member since 1966.



**Your Contact**

**Vincent ROGET**

**Sales Director**

**+33 (0)2 97 29 41 21**

**[vincent.roget@gisman.fr](mailto:vincent.roget@gisman.fr)**

